



# Upgrade to Propow's RV Lithium Batteries

*Powering up your mobile home with peaceful mind*

 Seamlessly Communicates with Victron Inverters

 7 Years Warranty

 Remote Diagnostics and Remote Upgrades

 Pre-heating System Optional

 Flexible and Versatile Sizing to Meet the Diverse  
Needs of Any RV

 Bluetooth Monitoring



[www.propowenergy.com](http://www.propowenergy.com)

# Ultimate Lithium Battery Solution

*1/2 Lighter, 2X Energy, 5X Longer Service Life*

Redefine Your Travel  
Experience!

Safe  
Durable  
Reliable  
Efficient



[inquiry@propowenergy.com](mailto:inquiry@propowenergy.com)



# Cutting-Edge LiFePO4 Battery Technology

## Power Your RV Adventures!



### 12.8V 60Ah

#### Electrical Specifications

Nominal Voltage: 12.8V  
Nominal Capacity: 60Ah  
Energy: 0.768Kwh  
Cycle Life: >4,000 cycles  
Connect in Parallel: Yes

#### Function

Bluetooth: Yes, customized bluetooth APP acceptable  
Heating System: Optional  
Remote Diagnostics and Upgradation: Available

#### Mechanical Specifications

Dimensions (L x W x H): 198\*166\*170mm \7.8x6.53x6.7"  
Weight: 7.5KG (16.5lb)  
Case Material & IP Rating: ABS, IP67

#### Charge & Discharge Specifications

Charge Current: 30  
Continuous Discharge Current: 60  
Peak Discharge Current: 120  
Max. Charge Voltage: 14.6V  
Cut-off Voltage: 10V  
Battery Management System(BMS): Yes, built-in BMS protection



### 12.8V 160Ah

#### Electrical Specifications

Nominal Voltage: 12.8V  
Nominal Capacity: 160Ah  
Energy: 2.048Kwh  
Cycle Life: >4,000 cycles  
Connect in Parallel: Yes

#### Function

Bluetooth: Yes, customized bluetooth APP acceptable  
Heating System: Optional  
Remote Diagnostics and Upgradation: Available

#### Mechanical Specifications

Dimensions (L x W x H): 329\*172\*235mm \12.95x6.77x9.25"  
Weight: 16KG (35.30lb)  
Case Material & IP Rating: ABS, IP67

#### Charge & Discharge Specifications

Charge Current: 50  
Continuous Discharge Current: 100  
Peak Discharge Current: 200  
Max. Charge Voltage: 14.6V  
Cut-off Voltage: 10V  
Battery Management System(BMS): Yes, built-in BMS protection



### 12.8V 100Ah

#### Electrical Specifications

Nominal Voltage: 12.8V  
Nominal Capacity: 100Ah  
Energy: 1.28Kwh  
Cycle Life: >4,000 cycles  
Connect in Parallel: Yes

#### Function

Bluetooth: Yes, customized bluetooth APP acceptable  
Heating System: Optional  
Remote Diagnostics and Upgradation: Available

#### Mechanical Specifications

Dimensions (L x W x H): 329\*172\*214mm \12.95x6.77x8.43"  
Weight: 11.2KG (24.7lb)  
Case Material & IP Rating: ABS, IP67

#### Charge & Discharge Specifications

Charge Current: 50  
Continuous Discharge Current: 100  
Peak Discharge Current: 200  
Max. Charge Voltage: 14.6V  
Cut-off Voltage: 10V  
Battery Management System(BMS): Yes, built-in BMS protection



### 12.8V 200Ah

#### Electrical Specifications

Nominal Voltage: 12.8V  
Nominal Capacity: 200Ah  
Energy: 2.56Kwh  
Cycle Life: >4,000 cycles  
Connect in Parallel: Yes

#### Function

Bluetooth: Yes, customized bluetooth APP acceptable  
Heating System: Optional  
Remote Diagnostics and Upgradation: Available

#### Mechanical Specifications

Dimensions (L x W x H): 345\*190\*245mm \13.58x7.48x9.65"  
Weight: 20.6KG (45.4lb)  
Case Material & IP Rating: ABS, IP67

#### Charge & Discharge Specifications

Charge Current: 100  
Continuous Discharge Current: 200  
Peak Discharge Current: 400  
Max. Charge Voltage: 14.6V  
Cut-off Voltage: 10V  
Battery Management System(BMS): Yes, built-in BMS protection



### 12.8V 200Ah

#### Electrical Specifications

Nominal Voltage: 12.8V  
Nominal Capacity: 200Ah  
Energy: 2.56Kwh  
Cycle Life: >4,000 cycles  
Connect in Parallel: Yes

#### Function

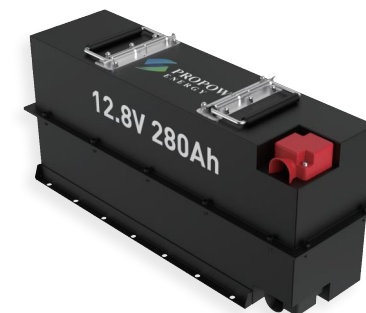
Bluetooth: Yes, customized bluetooth APP acceptable  
Heating System: Optional  
Remote Diagnostics and Upgradation: Available

#### Mechanical Specifications

Dimensions (L x W x H): 360\*330\*160mm \14.17x12.99x6.3"  
Weight: 27.6KG (60.9lb)  
Case Material & IP Rating: Steel, IP67

#### Charge & Discharge Specifications

Charge Current: 100  
Continuous Discharge Current: 150  
Peak Discharge Current: 300  
Max. Charge Voltage: 14.6V  
Cut-off Voltage: 10V  
Battery Management System(BMS): Yes, built-in BMS protection



### 12.8V 280Ah

#### Electrical Specifications

Nominal Voltage: 12.8V  
Nominal Capacity: 280Ah  
Energy: 3.584Kwh  
Cycle Life: >4,000 cycles  
Connect in Parallel: Yes

#### Function

Bluetooth: Yes, customized bluetooth APP acceptable  
Heating System: Optional  
Remote Diagnostics and Upgradation: Available

#### Mechanical Specifications

Dimensions (L x W x H): 580\*180\*270mm \22.83x7.08x10.63"  
Weight: 34KG(74.96lb)  
Case Material & IP Rating: Steel, IP67

#### Charge & Discharge Specifications

Charge Current: 100  
Continuous Discharge Current: 200  
Peak Discharge Current: 400  
Max. Charge Voltage: 14.6V  
Cut-off Voltage: 10V  
Battery Management System(BMS): Yes, built-in BMS protection



### 12.8V 519Ah

#### Electrical Specifications

Nominal Voltage: 12.8V  
Nominal Capacity: 519Ah  
Energy: 6.643Kwh  
Cycle Life: >4,000 cycles  
Connect in Parallel: Yes

#### Function

Bluetooth: Yes, customized bluetooth APP acceptable  
Heating System: Optional  
Remote Diagnostics and Upgradation: Available

#### Mechanical Specifications

Dimensions (L x W x H): 404\*404\*254mm \15.9x15.9x10"  
Weight: 54.88KG(120.99lb)  
Case Material & IP Rating: Steel, IP67

#### Charge & Discharge Specifications

Charge Current: 100  
Continuous Discharge Current: 200  
Peak Discharge Current: 400  
Max. Charge Voltage: 14.6V  
Cut-off Voltage: 10V  
Battery Management System(BMS): Yes, built-in BMS protection